



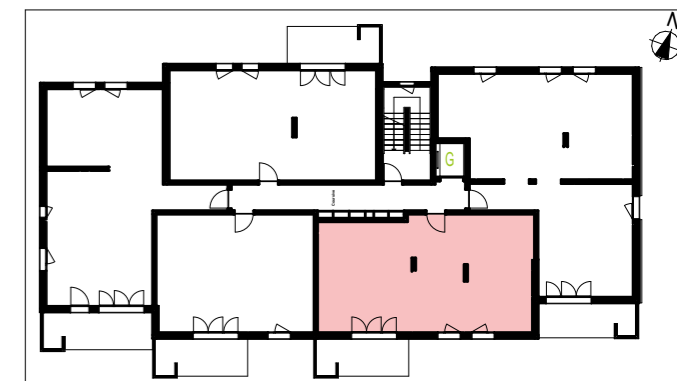
	Tableau électrique	BC	Baie coulissante
PL	Placard	PF	Porte-fenêtre
GT	Gaine technique	F	Fenêtre
VR	Volet Roulant	All. basse:	entre 0 et 50cm ht.
		All. moyenne:	entre 50 et 150cm ht.
		All. haute:	entre 150 et 190cm ht.
FR	Frigo	LL	Lave-linge
LV	Lave-vaisselle		Localisation de la faïence
	Cloison amovible		Limite Espace Boisé Classé (contraintes d'usage)
	Faux-plafond, soffite		Regard EP dans les jardins

Le terme "marche" est utilisé pour une hauteur > 4 cm

Diagram of a beam of length 5m, divided into four segments of 1m each. The segments are labeled 0, 1, 2, 3, 4, and 5m.

SD²access 
L'accès à votre mesure

The site plan illustrates the layout of the proposed development. It features three main buildings: a large rectangular building labeled 'G' in the center, a smaller rectangular building labeled 'H' to its left, and another rectangular building labeled 'I' at the top left. Building 'I' has a red 'I' on its roof. Building 'H' has a red 'H' on its roof. Building 'G' has a red 'G' on its roof. The buildings are surrounded by green spaces, trees, and parking areas. A north arrow is located in the top right corner of the plan.



N°	TYPE	ETAGE	BATIMENT
G0230	T3	2ème	G

Séjour - Cuisine	28,27 m ²
Entrée	5,18 m ²
Chambre 01	13,07 m ²
Chambre 02	10,14 m ²
Salle de Bains	5,32 m ²
WC	1,94 m ²
Dgt	2,62 m ²
66,54 m²	
Balcon	9,58 m ²

27/02/2024 - ind.00